



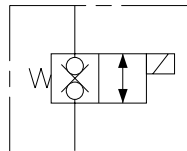
2.27

% E6#" Ž\$*

(bar) 240
(L/min) 75.7

.
. .
. IP69K E
. .
. .

02
02
02
02
03
03
04



2

0.16

240bar

7

0.41

IP69K

		240bar 3500psi			
		75.7L/min 20gpm			
		0.25 mL/min 5 /min @ 240bar			
		85% 115%			
20	E	12VDC	1.7 A	24VDC	0.85 A
	D	12VDC	1.67 A	24VDC	0.83 A
		240bar		85%	
		VC10-2			
		7.4 420mm ² /s			
		-40 100			
		-54 107			
		-26 204			
		ISO4406 18/16/13			15/13/11

bar/psi

L/min /gpm

