

03

04

05

07

08

03

1.

‰

‰

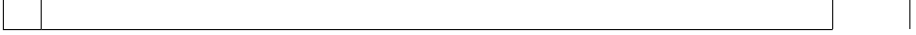
‰

2

3.



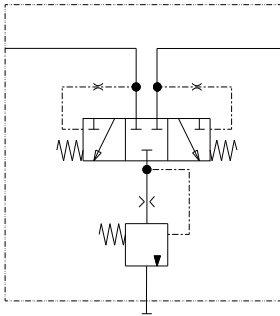
A, B	__)	40
	L/_ [)	55
	TSd)	450
	TSd)	12/16
	TSd)	3p5
	L/_ [)	2.2p55
)	-40p+115
]Y)	1.9



			00
c_n $L/_ [$ $b = b_{ND} - b_G = 25TSd$ $h = 10_ _ ^2/e$ $b_{ND} =$ $b_G =$ $h =$	$(L/_ [$)	$(_ _)$	
	2.2	1.0	10
	3.2	1.2	12
	4.3	1.4	14
	5.5	1.6	16
	7	1.8	18
	8.8	2.0	20
	11.5	2.3	23
	12.5	2.4	24
	13.7	2.5	25
	17.2	2.8	28
	20	3.0	30
	27	3.5	35
	35	4	40
55	5	50	

A		A
B		B
A B		C

16TSd		H16
12TSd	50L/_ [H12



60

A
M22× 1.5

B
M22× 1.5

T
M22× 1.5

03

		ISO 9974-1		D	L	
	HFV08	A, B		M22° 1.5	28	14_ [
		F				

