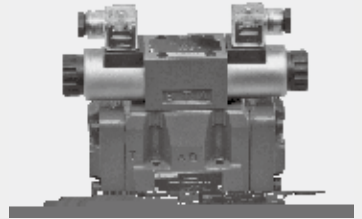




215

WEH 10 16 25 32

(NG) 10 32  
350bar  
1100L/min



02-06  
07-08  
09-11  
12-16  
17-18  
19-20  
21  
22-25

WEH  
DIN24 340A  
ISO 4401 CETOP-RP 121H

WEH

DIN2430 ISO4401

250 bar

WEH

1

2

3

4

2

4

5

4

4

2

3

6

4

7

4

4

2

2

2

2

6

6

4

4

Y

T

1-

2-

3-

4-

5-

6-

7-

8-

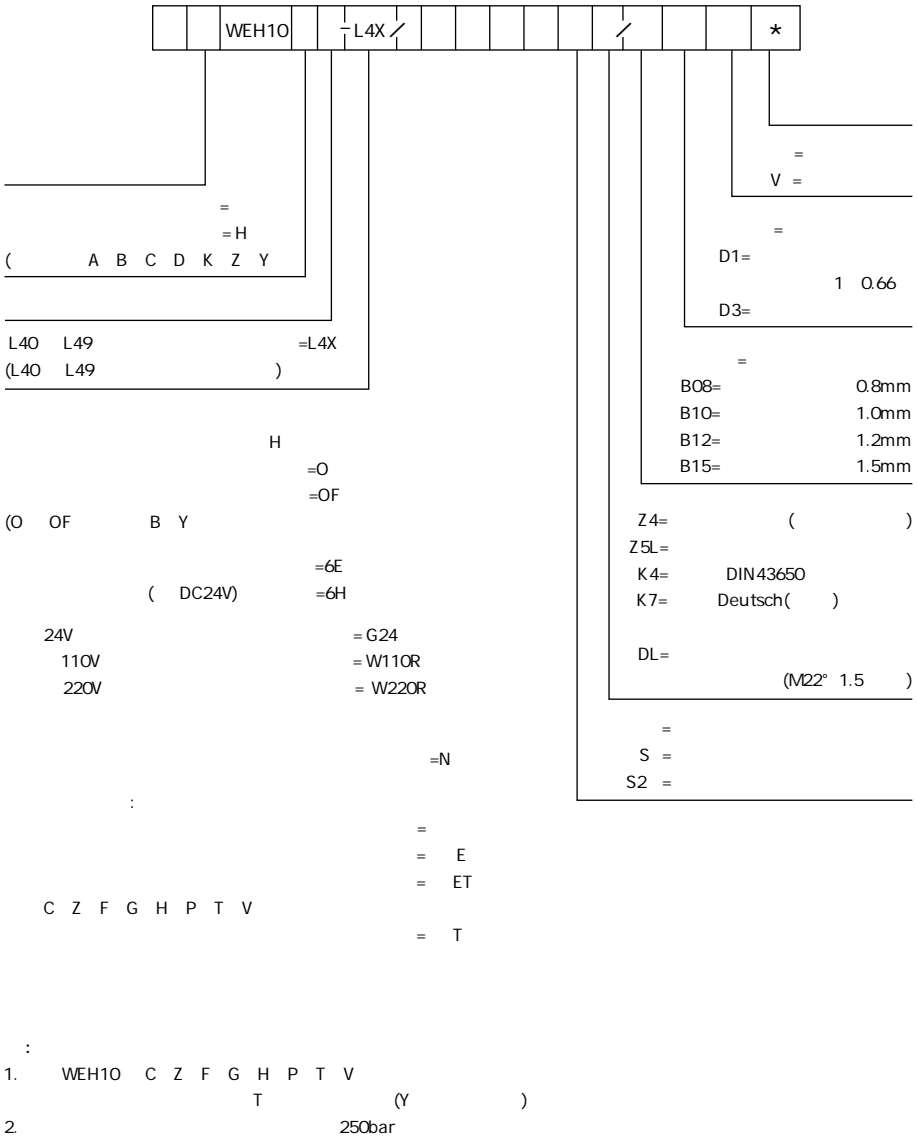
02











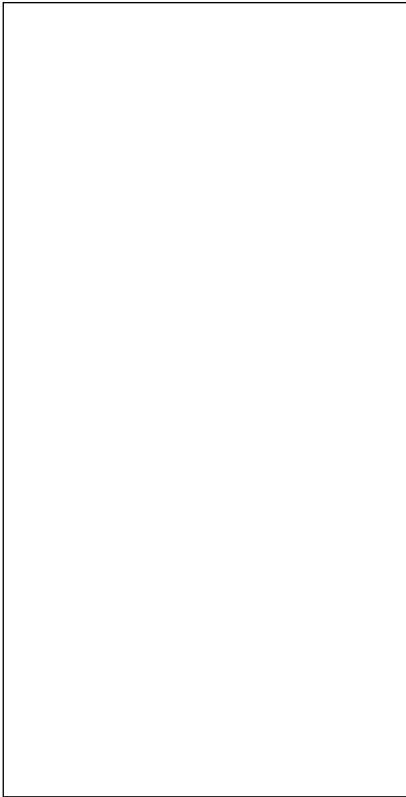
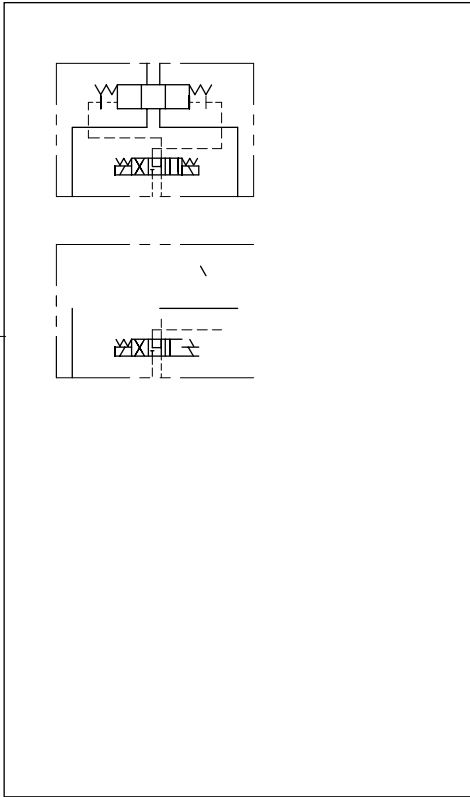


02

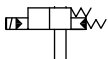
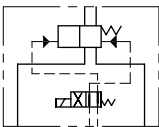
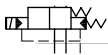
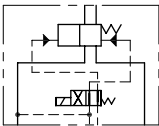
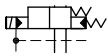
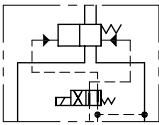
: 16 = 16  
 25 = 25  
 32 = 32  
 =  
 =H

L70 L79 = L7X  
 (L70 L79: )

=O  
 =OF  
 ( H O OF B Y









1.

2). WEH16

P A B		bar	WEH16...					
			350					
T		bar	250					
		bar	210	160				
Y		bar	210	160				
		bar	14					
			14					
			14					
				C Z F G H P T V 4.5				
		bar	250					
			-30	80( )				
			-20	80( )				
		mm <sup>2</sup> /s	2.8	500				
		cm <sup>3</sup>	5.72					
		cm <sup>3</sup>	11.45					
* 0								
		bar	50		150		250	
-		ms	35	65	30	60	30	58
-		ms	45	65	35	55	30	50
* 0								
-		ms	30					
-		ms	45	45	35	35	30	30
			C D K Z Y					

02



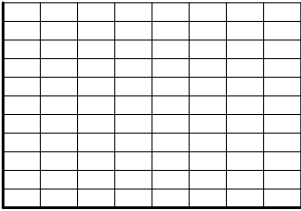
02



## 2

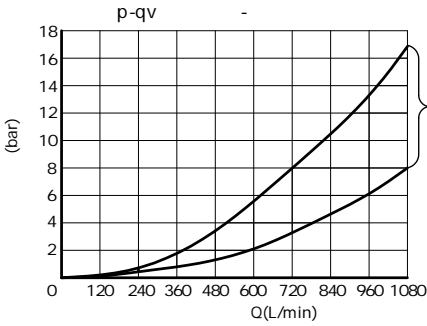
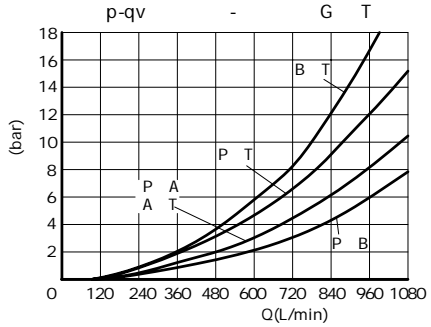
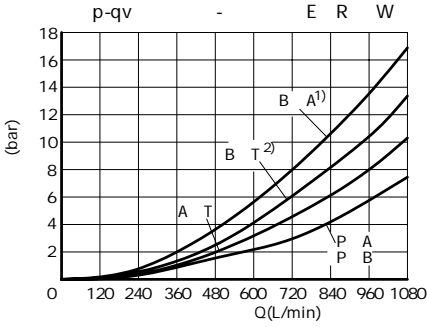
( ± 10%)	12 24 28 <sup>1)</sup> 48 96		110 127 220
	110 205 220		
W	30	16	
VA			50
VA			220
	+50		

1)



( HLP46 =40 ± 5 )

**WEH 32..**



- 1) R
- 2) R

**WEH32**

		(mm <sup>2</sup> )			
		P A	P B	A T	B T
WEH10	Q	-	-	13	13
	V	13	13	13	13
	W	-	-	2.4	2.4
WEH16	Q	-	-	32	32
	V	32	32	32	32
	W	-	-	6	6
WEH25	Q	-	-	83	83
	V	83	83	83	83
	W	-	-	14	14
WEH32	Q	-	-	78	78
	V	73	73	84	84
	W	-	-	20	20









100



