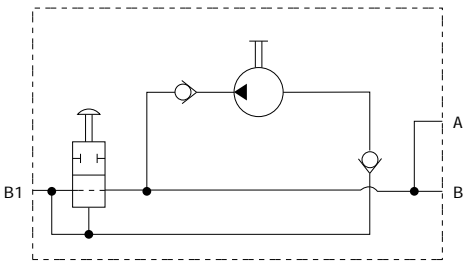
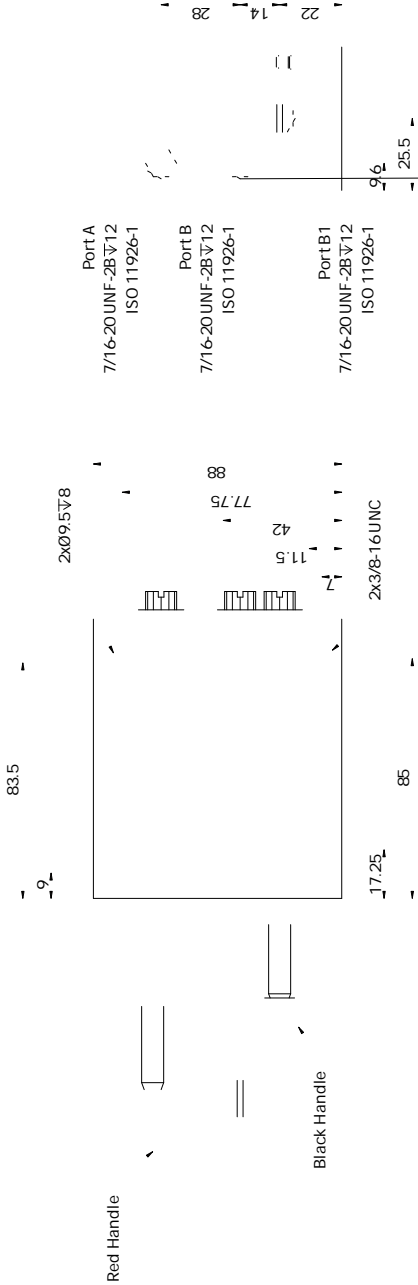


Overview.....	02
Specification.....	02
Hydraulic diagram.....	02
Order .....	R 2

04





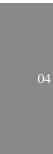
Port A  
7/16-20 UNF-2B Y12  
ISO 11926-1

Port B  
7/16-20 UNF-2B Y12  
ISO 11926-1

Port B1  
7/16-20 UNF-2B Y12  
ISO 11926-1

Red Handle

Black Handle



04